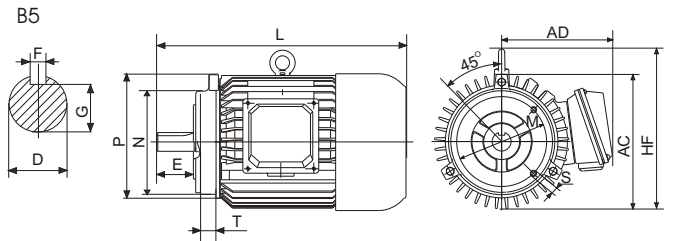
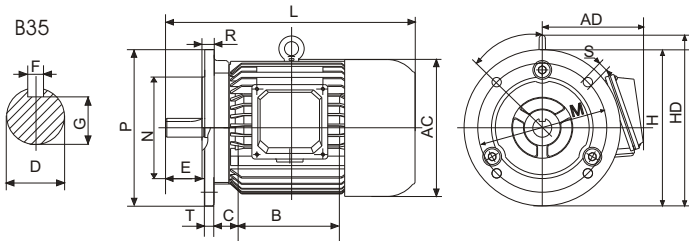
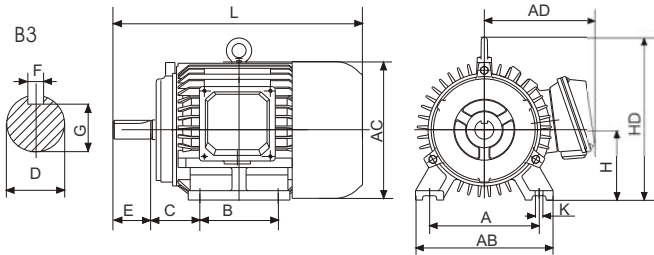


Y SERIES THREE-PHASE INDUCTION MOTOR

Y Series motor is totally enclosed and fan cooling, three-phase squirrel cage induction motor. It is newly designed in conformity with the relevant rules of IEC and DIN42673 standards.

Y series motors have outstanding performance, such as high efficiency, less consumption, high starting torque, low noise, little vibration, reliable operation and easy maintenance etc.

Y series motors are widely used in many places, where do not exist combustible, explosive or corrosive gas, without any special requirements, such as machine tools, pumps, fans, transport machinery, mixer, agriculture machinery and food machines etc.



INSTALLATION SIZE AND OVERALL DIMENSIONz

in mm

Frame No	Installation Size														Overall Dimension					
	A	B	C	D	E	F	G	H	K	M	N	P	R	S	T	AB	AC	AD	HD	L
Y80	125	100	50	19	40	6	15.5	80	10	165	130	200	0	12	3.5	165	175	150	175	290
Y90S	140	100	56	24	50	8	20	90	10	165	130	200	0	12	3.5	180	195	160	195	315
Y90L	140	125	56	24	50	8	20	90	10	165	130	200	0	12	3.5	180	195	160	195	340
Y100L	160	140	70	28	60	8	24	100	12	215	180	250	0	15	4.0	205	215	180	245	380
Y112M	190	140	70	28	60	8	24	112	12	215	180	250	0	15	4.0	245	240	190	265	400
Y132S	216	140	89	38	80	10	33	132	12	265	230	300	0	15	4.0	280	275	210	315	475
Y132M	216	178	89	38	80	10	33	132	12	265	230	300	0	15	4.0	280	275	210	315	515
Y160M	245	210	108	42	110	12	37	160	15	300	250	350	0	19	5.0	325	325	255	385	600
Y160L	245	254	108	42	110	12	37	160	15	300	250	350	0	19	5.0	325	325	255	385	645
Y180M	279	241	121	48	110	14	42.5	180	15	300	250	350	0	19	5.0	355	360	285	430	670
Y180L	279	279	121	48	110	14	42.5	180	15	300	250	350	0	19	5.0	355	360	285	430	710
Y200L	318	305	133	55	110	16	49	200	19	350	300	400	0	19	5.0	395	400	310	475	775
Y225S	356	286	149	60	110	18	53	225	19	400	350	450	0	19	5.0	435	470	345	520	820
Y225M-2	356	311	149	55	110	16	49	225	19	400	350	450	0	19	5.0	435	470	345	520	815
Y225M	356	311	149	60	140	18	53	225	19	400	350	450	0	19	5.0	435	470	345	520	845
Y250M-2	406	349	168	60	140	18	53	250	24	500	450	550	0	19	5.0	490	515	385	575	930
Y250M	406	349	168	65	140	18	58	250	24	500	450	550	0	19	5.0	490	515	385	575	930
Y280S-2	457	368	190	65	140	18	58	280	24	500	450	550	0	19	5.0	550	585	410	640	1000
Y280S	457	368	190	75	140	20	67.5	280	24	500	450	550	0	19	5.0	550	585	410	640	1000
Y280M-2	457	419	190	65	140	18	58	280	24	500	450	550	0	19	5.0	550	585	410	640	1050
Y280M	457	419	190	75	140	20	67.5	280	24	500	450	550	0	19	5.0	550	585	410	640	1050
Y315S-2	508	406	216	65	140	18	58	315	28	600	550	660	0	24	6.0	744	645	576	865	1240
Y315S	508	406	216	80	170	22	71	315	28	600	550	660	0	24	6.0	744	645	576	865	1270
Y315M-2	508	457	216	65	140	18	58	315	28	600	550	660	0	24	6.0	744	645	576	865	1310
Y315M	508	457	216	80	170	22	71	315	28	600	550	660	0	24	6.0	744	645	576	865	1340
Y315L-2	508	508	216	65	140	18	58	315	28	600	550	660	0	24	6.0	744	645	576	865	1310
Y315L	508	508	216	80	170	22	71	315	28	600	550	660	0	24	6.0	744	645	576	865	1340

TECHNICAL DATA

TYPE	Power kW	Current (A)	Power Factor	Eff (%)	Speed (r/min)	Tst/Tn	Ist/In	Tmax/Tn	NW.kg	Packing size (cm)
380V 50Hz Synchronous Speed 3000 r/min (2 Poles)										
Y-801-2	0.75	1.8	0.84	75.0	2830	2.2	7	2.2	16	36X31X22.8
Y-802-2	1.1	2.5	0.86	77.0	2830	2.2	7	2.2	17	36X31X22.8
Y-90S-2	1.5	3.4	0.85	78.0	2840	2.2	7	2.2	22	41X3X25
Y-90L-2	2.2	4.7	0.86	82.0	2840	2.2	7	2.2	24	41X3X25
Y-100L-2	3	6.4	0.87	82.0	2870	2.2	7	2.2	36	47X37X29
Y-112M-2	4	8.2	0.87	85.5	2890	2.2	7	2.2	48	48X39X31
Y-132S1-2	5.5	11.0	0.88	85.5	2900	2	7	2.2	66	55X43X35
Y-132S2-2	7.5	15.0	0.88	86.2	2900	2	7	2.2	78	55X43X35
Y-160M1-2	11	22.0	0.88	87.2	2930	2	7	2.2	110	75X50X42
Y-160M2-2	15	29.0	0.88	88.2	2930	2	7	2.2	110	75X50X42
Y-160L-2	18.5	36.0	0.89	89.0	2930	2	7	2.2	120	75X50X42
Y-180M-2	22	42.0	0.89	89.0	2940	2	7	2.2	180	81X57X46.5
Y-200L1-2	30	57.0	0.89	90.0	2950	2	7	2.2	211	87X61X52
Y-200L2-2	37	70.0	0.89	90.5	2950	2	7	2.2	211	87X61X52
Y-225M-2	45	84.0	0.89	91.5	2970	2	7	2.2	260	94X64X57
Y-250M-2	55	103.0	0.89	91.5	2960	2	7	2.2	400	103X75X68
380V 50Hz Synchronous Speed 1500 r/min (4 Poles)										
Y-801-4	0.55	1.5	0.76	73.0	1390	2.2	6.5	2.2	16	36X31X22.8
Y-802-4	0.75	2.0	0.76	74.5	1390	2.2	6.5	2.2	17	36X31X22.8
Y-90S-4	1.1	2.8	0.78	78.0	1400	2.2	6.5	2.2	22	41X3X25
Y-90L-4	1.5	3.7	0.79	79.0	1400	2.2	6.5	2.2	24	41X3X25
Y-100L1-4	2.2	5.0	0.82	81.0	1430	2.2	7	2.2	36	47X37X29
Y-100L2-4	3	6.8	0.81	82.5	1430	2.2	7	2.2	38	47X37X29
Y-112M-4	4	8.8	0.82	84.5	1440	2.2	7	2.2	48	48X39X31
Y-132S-4	5.5	12.0	0.84	85.5	1440	2.2	7	2.2	66	55X43X35
Y-132M-4	7.5	15.0	0.85	87.0	1440	2.2	7	2.2	78	55X43X35
Y-160M-4	11	23.0	0.84	88.0	1460	2.2	7	2.2	110	75X50X42
Y-160L-4	15	30.0	0.85	88.5	1460	2.2	7	2.2	120	75X50X42
Y-180M-4	18.5	36.0	0.86	91.0	1470	2	7	2.2	180	81X57X46.5
Y-180L-4	22	43.0	0.86	91.5	1470	2	7	2.2	197	81X57X46.5
Y-200L-4	30	57.0	0.87	92.2	1470	2	7	2.2	211	87X61X52
Y-225S-4	37	70.0	0.87	91.8	1480	1.9	7	2.2	250	82.5X72X65
Y-225M-4	45	84.0	0.88	92.3	1480	1.9	7	2	260	94X64X57
Y-250M-4	55	103.0	0.88	92.6	1480	2	7	2.2	400	103X75X68
380V 50Hz Synchronous Speed 1000 r/min (6 Poles)										
Y-90S-6	0.75	2.3	0.70	72.5	910	2	6	2	22	41X33X25
Y-90L-6	1.1	3.2	0.72	73.5	910	2	6	2	24	41X33X25
Y-100L-6	1.5	4.0	0.74	77.5	940	2	6	2	36	47X37X29
Y-112M-6	2.2	5.6	0.74	80.5	940	2	6	2	48	48X39X31
Y-132S-6	3	7.2	0.76	83.0	960	2	6.5	2	66	55X43X35
Y-132M1-6	4	9.4	0.77	84.0	960	2	6.5	2	73	60X43X35
Y-132M2-6	5.5	13.0	0.78	85.3	960	2	6.5	2	81	60X43X35
Y-160M-6	7.5	17.0	0.78	86.0	970	2	6.5	2	110	75X50X42
Y-160L-6	11	25.0	0.78	87.0	970	2	6.5	2	110	75X50X42
Y-180L-6	15	31.0	0.81	89.5	970	1.8	6.5	2	197	81X57X46.5
Y-200L1-6	18.5	38.0	0.83	89.8	970	1.8	6	2	211	87X61X52
Y-200L2-6	22	45.0	0.83	90.2	970	1.8	6.5	2	211	87X61X52
Y-225M-6	30	60.0	0.85	92.6	980	1.7	6.5	2	260	94X64X57
Y-250M-6	37	72.0	0.86	81.0	980	1.8	6.5	2	400	103X75X68
380V 50Hz Synchronous Speed 750 r/min (8 Poles)										
Y-132S-8	2.2	5.8	0.71	82.0	710	2	5.5	2	66	55X43X35
Y-132M-8	3	7.7	0.72	84.0	710	2	5.5	2	73	60X43X35
Y-160M1-8	4	9.9	0.73	85.0	720	2	6	2	110	75X50X42
Y-160M2-8	5.5	13.0	0.74	86.0	720	2	6	2	110	75X50X42
Y-160L-8	7.5	18.0	0.75	89.0	720	2	5.5	2	120	75X50X42
Y-180L-8	11	25.0	0.77	86.5	730	1.7	6	2	197	81X57X46.5
Y-200L-8	15	34.0	0.76	88.0	730	1.8	6	2	211	87X61X52
Y-225S-8	18.5	41.0	0.76	89.5	730	1.7	6	2	250	82.5X72X65
Y-225M-8	22	48.0	0.78	90.0	740	1.8	6	2	260	94X64X57
Y-250M-8	30	63.0	0.80	90.5	740	1.8	6	2	400	103X75X68