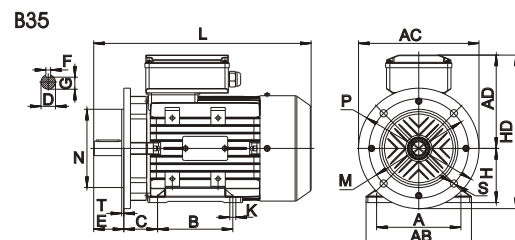
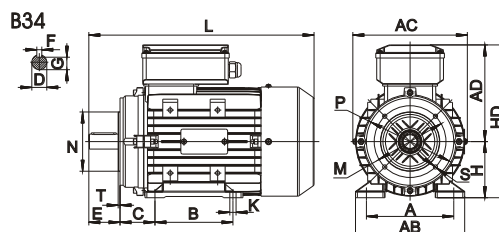
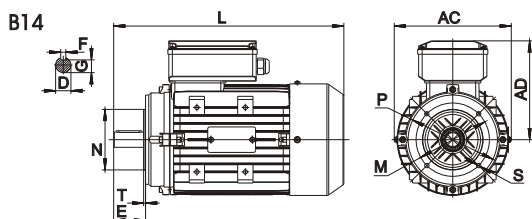
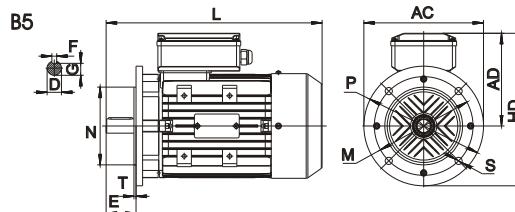
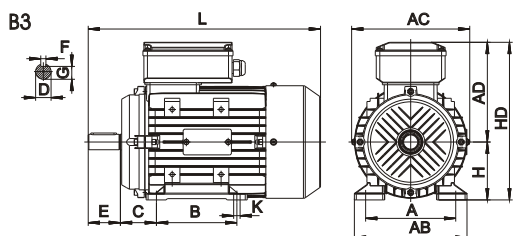
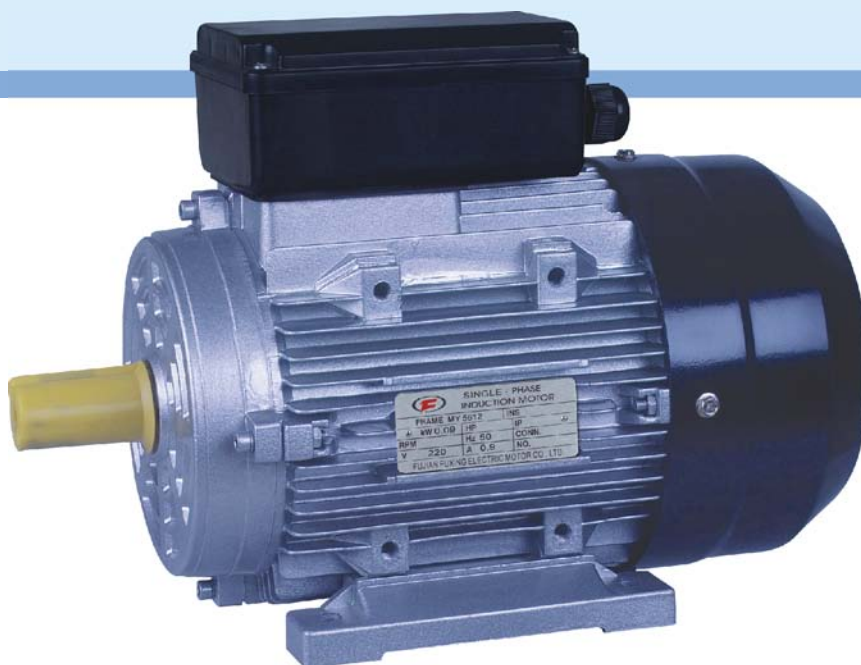


MY SERIES SINGLE-PHASE INDUCTION MOTOR WITH ALUMINIUM HOUSING

MY series aluminium housing single-phase capacitor-run synchronous motors, with latest design in entirety, are made of quality materials and meet the relative rules of IEC standard. MY motors have good performance, safe and reliable operation, nice appearance, which can be maintained very conveniently while with low noise, little vibration, light weight and simple construction.

This series motors can be used on household applicants, pumps, fan and recording meters etc.



INSTALLATION SIZE AND OVERALL DIMENSION

in mm

| Frame No | Installation Size | | | | | | | | | | Installation Size For B14 | | | | | | Installation Size For B5 | | | | | | Overall Dimension | | | | |
|----------|-------------------|-----|----|----|----|---|------|----|-----|--|---------------------------|----|-----|---|----|-----|--------------------------|-----|-----|---|----|-----|-------------------|-----|-----|-----|-----|
| | A | B | C | D | E | F | G | H | K | | M | N | P | R | S | T | M | N | P | R | S | T | AB | AC | AD | HD | L |
| 56 | 90 | 71 | 36 | 9 | 20 | 3 | 7.2 | 56 | 5.8 | | 65 | 50 | 80 | 0 | M5 | 2.5 | 98 | 80 | 120 | 0 | 7 | 3.0 | 112 | 115 | 104 | 160 | 198 |
| 63 | 100 | 80 | 40 | 11 | 23 | 4 | 8.5 | 63 | 7 | | 75 | 60 | 90 | 0 | M5 | 2.5 | 115 | 95 | 140 | 0 | 10 | 3.0 | 120 | 127 | 110 | 173 | 225 |
| 71 | 112 | 90 | 45 | 14 | 30 | 5 | 11 | 71 | 7 | | 85 | 70 | 105 | 0 | M6 | 2.5 | 130 | 110 | 160 | 0 | 10 | 3.5 | 135 | 145 | 119 | 190 | 255 |
| 80 | 125 | 100 | 50 | 19 | 40 | 6 | 15.5 | 80 | 10 | | 100 | 80 | 120 | 0 | M6 | 3.0 | 165 | 130 | 200 | 0 | 12 | 3.5 | 155 | 165 | 138 | 228 | 295 |
| 90S | 140 | 100 | 56 | 24 | 50 | 8 | 20 | 90 | 10 | | 115 | 95 | 140 | 0 | M8 | 3.0 | 165 | 130 | 200 | 0 | 12 | 3.5 | 175 | 180 | 145 | 235 | 331 |
| 90L | 140 | 125 | 56 | 24 | 50 | 8 | 20 | 90 | 10 | | 115 | 95 | 140 | 0 | M8 | 3.0 | 165 | 130 | 200 | 0 | 12 | 3.5 | 175 | 180 | 145 | 235 | 361 |

TECHNICAL DATA

| TYPE | Power (KW) | Current (A) | Speed (r/min) | Eff (%) | Power Factor | Tst/Tn (Time) | Tmax/Tn (Time) | Ist/In | NW.kg | Packing size (mm) |
|--|------------|-------------|---------------|---------|--------------|---------------|----------------|--------|-------|-------------------|
| 220V 50Hz Synchronous Speed 3000 r/min(2 Poles) | | | | | | | | | | |
| My5612 | 0.09 | 0.9 | 2730 | 53 | 0.90 | 0.45 | 1.6 | 4.5 | 3.6 | 220X120X170 |
| My5622 | 0.12 | 0.97 | 2740 | 57 | 0.90 | 0.45 | 1.6 | 4.5 | 4 | 220X120X170 |
| MY631-2 | 0.18 | 1.48 | 2750 | 60 | 0.92 | 0.40 | 1.6 | 4.5 | 4 | 260X160X180 |
| MY632-2 | 0.25 | 1.96 | 2750 | 63 | 0.92 | 0.40 | 1.6 | 4.5 | 4.5 | 260X160X180 |
| MY711-2 | 0.37 | 2.73 | 2780 | 67 | 0.92 | 0.35 | 1.6 | 4.5 | 5.6 | 285X170X220 |
| MY712-2 | 0.55 | 3.88 | 2780 | 70 | 0.92 | 0.35 | 1.6 | 4.5 | 6.2 | 285X170X220 |
| MY801-2 | 0.75 | 5.15 | 2780 | 72 | 0.92 | 0.35 | 1.7 | 4.5 | 9 | 330X190X270 |
| MY802-2 | 1.10 | 7.02 | 2800 | 75 | 0.95 | 0.35 | 1.7 | 4.5 | 10 | 330X190X260 |
| MY90S-2 | 1.50 | 9.44 | 2800 | 76 | 0.95 | 0.35 | 1.7 | 5 | 13 | 375X210X275 |
| MY90L-2 | 2.20 | 13.67 | 2800 | 77 | 0.95 | 0.35 | 1.7 | 5 | 14.5 | 375X210X285 |
| 220V 50Hz Synchronous Speed 1500 r/min(4 Poles) | | | | | | | | | | |
| My5614 | 0.06 | 0.68 | 1330 | 48 | 0.90 | 0.45 | 1.6 | 4.5 | 3.6 | 220X120X170 |
| My5624 | 0.09 | 0.99 | 1340 | 50 | 0.90 | 0.45 | 1.6 | 4.5 | 4 | 220X120X170 |
| MY631-4 | 0.12 | 1.10 | 1350 | 55 | 0.90 | 0.4 | 1.6 | 4.5 | 4 | 260X170X180 |
| MY632-4 | 0.18 | 1.62 | 1350 | 56 | 0.90 | 0.4 | 1.6 | 4.5 | 4.5 | 260X170X180 |
| MY711-4 | 0.25 | 2.02 | 1370 | 61 | 0.92 | 0.35 | 1.6 | 4.5 | 6.2 | 285X180X230 |
| MY712-4 | 0.37 | 2.95 | 1370 | 62 | 0.92 | 0.35 | 1.6 | 4.5 | 6.9 | 285X180X220 |
| MY801-4 | 0.55 | 4.25 | 1380 | 64 | 0.92 | 0.35 | 1.7 | 4.5 | 9.5 | 330X190X270 |
| MY802-4 | 0.75 | 5.45 | 1380 | 68 | 0.92 | 0.35 | 1.7 | 4.5 | 10.5 | 330X190X260 |
| MY90S-4 | 1.10 | 7.45 | 1390 | 71 | 0.95 | 0.35 | 1.7 | 4.54.5 | 13.5 | 375X210X275 |
| MY90L-4 | 1.50 | 9.83 | 1400 | 73 | 0.95 | 0.35 | 1.7 | 4.5 | 14.5 | 375X210X285 |
| 220V 50Hz Synchronous Speed 1000 r/min(6 Poles) | | | | | | | | | | |
| MY8016 | 0.25 | 2.1 | 890 | 58 | 0.95 | 0.35 | 1.6 | 4.5 | 9.5 | 330X190X280 |
| MY8026 | 0.37 | 3.1 | 900 | 61 | 0.95 | 0.35 | 1.6 | 4.5 | 10.5 | 330X190X280 |
| MY90S6 | 0.55 | 4.4 | 910 | 64 | 0.95 | 0.35 | 1.6 | 4.5 | 13.5 | 375X210X275 |
| MY90L6 | 0.75 | 5.7 | 910 | 66 | 0.95 | 0.35 | 1.6 | 4.5 | 14.5 | 375X210X275 |